



# Wireless Access: UT Personnel

UT Department of Theatre • 206 McClung Tower • Knoxville, TN 37996

In order to access the wireless network you must have a wireless device compatible with the IEEE 802.11 B, G, or N standards. **FOR MORE INFO?, SEE “WHAT IS IEEE 802.11 B/G/N?” IN THE WIRELESS ACCESS APPENDIX.**

Almost every notebook computer sold today has an internal wireless card capable of connecting to the UT wireless network. Many other devices are also wireless-capable. Whatever the device, there are two main steps you must perform to use UT's wireless network.

1. Connect to the Wireless Network
2. Register your device on UT's Network

## CONNECTING TO THE WIRELESS NETWORK ON CAMPUS

Turn on your laptop and make sure your wireless card (internal or external) is properly installed and turned on (Not all wireless cards have to be turned on, some do. If you are not sure how to activate your card, refer to the manual for your card or laptop.) If your wireless card has an antenna, be sure it is extended.

Now open your wireless configuration tool. For some, the wireless configuration tool will be the built in to your operating system and for others it will be the client that came with your wireless card. Other devices, such as PDAs, phones, and gaming devices will have some sort of configuration management interface - check your product's documentation for more information about configuring your wireless connection.

Once your wireless card is on, have it detect the networks in the area (most computers and devices will do this automatically). After your device detects the networks, select “ut-open” from the available options. The pictures below show where to click on most computers (Mac, Win XP, Win Vista/7).



**MAC OS X:** Click the icon then select “ut-open”

**WINDOWS XP:** Double-Click the icon then select “ut-open”

**WINDOWS VISTA/7:** Click the icon then select “Connect to a Network” then choose “ut-open” from the list and click “Connect”

When you connect to this network, your software might warn you that the network you are connecting to is not encrypted. This is expected since we do not use encryption on the open network and you should continue anyway. A secure network is available to Faculty, Staff, and Students. For instructions on joining your computer to the secure network go to the appropriate address below:

**MAC OS X:** <http://oit.utk.edu/helpdesk/kb/entry/1022/>

**WINDOWS XP:** <http://oit.utk.edu/helpdesk/kb/entry/1023/>

**WINDOWS VISTA/7:** <http://oit.utk.edu/helpdesk/kb/entry/1331/>

**MORE INFO ON WIRELESS SECURITY?: SEE “WHAT IS A SECURE CONNECTION?” IN THE WIRELESS ACCESS APPENDIX.**

## REGISTRATION WARNINGS

**WARNING—LAPTOP USERS:** Make sure you have the laptop plugged up and not running on battery power, as the process on some machines can take up to two hours to complete.

**ADVISORY—WINDOWS REGISTRATION:** The registration program will check to see if your Windows computer has the latest Microsoft service packs and hot fixes. If the service packs and hot fixes are not found, then the program will install them. Installation of service packs may take a while to complete. Please **DO NOT** stop this process once it starts, as it may (and probably will) damage your operating system.

Once the Microsoft updates have been installed, the program will also modify several local security policies on your computer to enable a lockout policy, disable guest and anonymous user access, and enforce strong passwords. Last, you will be asked to go through a process which will check any account on your computer with administrator access to ensure that the accounts has both a strong user names and password. The registration process may take up to two hours to run. For more information on these changes see: <http://oit.utk.edu/helpdesk/kb/entry/905/>

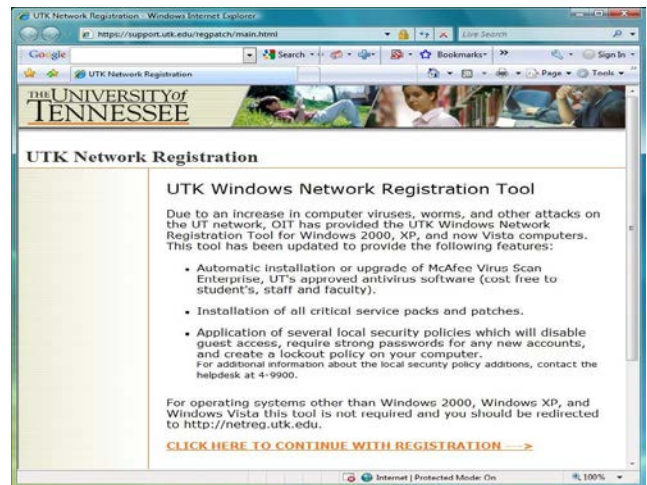
## REGISTERING ON THE UT NETWORK

**BE SURE YOU HAVE READ AND UNDERSTOOD THE PREVIOUS SECTION BEFORE BEGINNING.**

Now that you are connected to the network, you will need to register your computer or device. This makes it so that the network can “recognize” your device the next time it tries to connect. To begin the registration process, open an internet browser window (Safari, Internet Explorer, Chrome, Firefox, etc). If your browser does not automatically go to the registration site, type <https://support.utk.edu> in the address blank. You should be automatically redirected to the page at right.

To register, you will be prompted to enter your NetID and your NetID password.

**When registering, your Group is: CBT and your LAN Manager is: theatreadmins**



Read the on-screen info and follow the instructions to complete the network registration process. A step-by-step walkthrough is available at: <http://oit.utk.edu/helpdesk/kb/entry/1345/>. If you encounter difficulty, contact the OIT HelpDesk at 865.974.9900 or visit them on the web at <http://help.utk.edu>.

Once your laptop has been successfully registered, you will be able to connect to the wireless network and check mail, access web sites, etc. Remember that the wireless network “ut-open” is not encrypted, so please avoid engaging in any sensitive or confidential activities while using the wireless network.